



MONROVIA®

---

2022

*Landscape Style Guide*





# Create lasting beauty with the latest gardening trends



Design trends may come and go, but the beauty of a garden never goes out of style. Join us as we explore the top five trends shaping gardens today while illustrating how to create lasting beauty that delights for decades. Inside, you'll find examples of each trend in a real-life garden, an explanation of how to achieve the look, as well as landscape plans and plant lists that demonstrate how to turn the inspiration into a reality.

After you take time to dream about how you can cultivate beauty in your own space, we invite you to visit your nearest Monrovia retailer (use the “Find a Garden Center” tool at [Monrovia.com](https://www.monrovia.com) to find yours) armed with a vision for a garden that will bring you joy, serenity, and satisfaction for years to come.

Looking for more garden inspiration? Check out our Be Inspired blog and Grow Beautifully newsletter to get more garden design advice, gardening tips, plant information, and much more.



PHOTO AND DESIGN BY BLISS GARDEN DESIGN, LLC

## ONE

### *Dark Meets Light*

---

*Elevate the visual interest  
of your garden by creating contrast  
for the eye.*





### Sirens' Song™ Dark n' Bright Heuchera

A captivating, exclusive new variety with hot-pink blooms that lure hummingbirds and create a striking contrast against the dark foliage.

UP TO 18" TALL, 15" WIDE  
PART SHADE  
ZONES 4-9  
#42867



### Regal Mist® Pink Muhly Grass

Airy pink-red flowers and glossy green foliage make for a spectacular show when planted en masse. Especially showy when back-lit by the sun.

UP TO 4' TALL, 3' WIDE  
PART TO FULL SUN  
ZONES 6-9  
#02467



### Happy Days™ Orange-Red Bicolor Dahlia

Vibrant, single flowers with yellow-tipped red petals pop against the nearly black, dissected foliage of this well-branched Dahlia. A gorgeous, dramatic annual in all zones.

UP TO 14" TALL AND WIDE  
FULL SUN  
ALL ZONES  
#44183



### Petite Plum® Ninebark

The striking burgundy-plum foliage on this mounded shrub sets off the showy flower clusters in spring and attractive seed pods in summer.

UP TO 6' TALL, 5' WIDE  
PART TO FULL SUN  
ZONES 4-8  
#40989



### Royal Purple Smoke Tree

Breathtaking, airy seed clusters emerge like pink clouds from the red-purple foliage, which turns to a scarlet red in autumn.

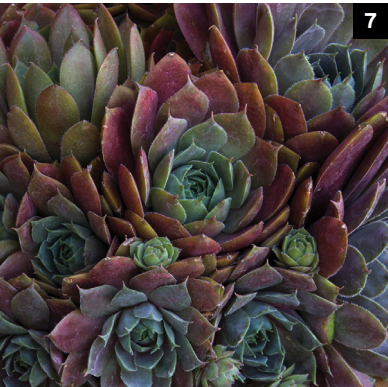
UP TO 15' TALL, 12' WIDE  
FULL SUN  
ZONES 4-8  
#02814



### Vision in White Astilbe

Tall, feathery, white flowers bloom above deep bronze-green foliage. This compact, robust selection tolerates heat and dry periods.

UP TO 2' TALL AND WIDE  
PART TO FULL SHADE  
ZONES 4-8  
#01760



### Krebs Desert Bloom Hens and Chicks

Mounding, cold-hardy succulents add low-growing texture and color to the garden with foliage that ranges from silvery green to deep purple.

UP TO 8" TALL, 12" WIDE  
FULL SUN  
ZONES 4-8  
#06561



### Sunstar™ Rose Coreopsis

Another stunning new exclusive from Monrovia, with a tidy habit, and profuse, dynamic flowers that persist through the heat of summer.

UP TO 24" TALL, 30" WIDE  
FULL SUN  
ZONES 4-9  
#42887

## Get the Look: Dark Meets Light

The garden trend where Dark Meets Light is a study in contrasts. This landscape makes a bold statement and captures the eye by pairing darker foliage plants with white or bright blooms. The drama of this garden is deepened with varied textures and lush foliage, and can be complementary to all styles of home architecture.

### HOW TO CREATE IT

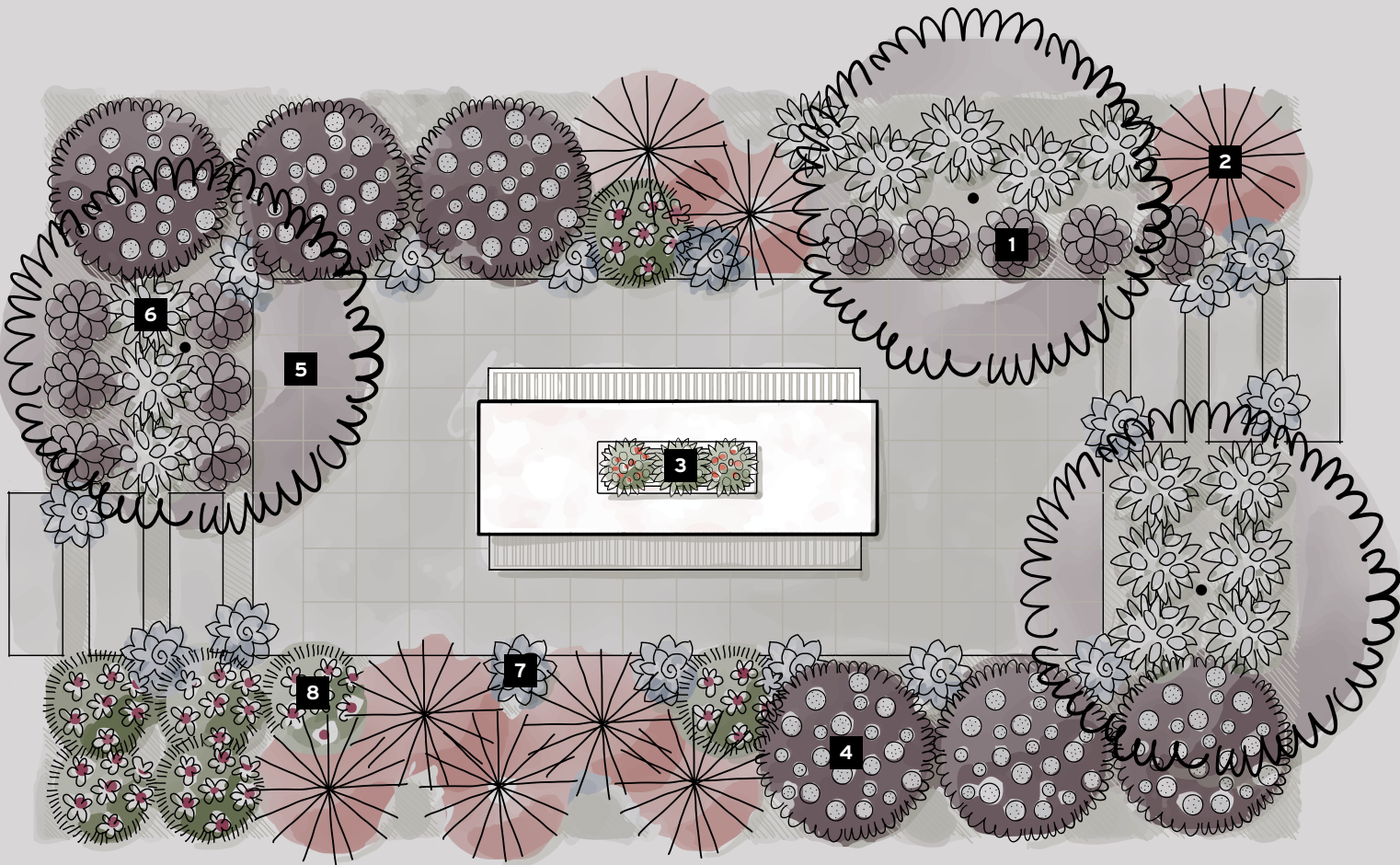
*Start by choosing small trees with dark plum or deep green foliage.*

*Choose flowering shrubs with small white blooms.*

*Add fine textured grasses in silvery grays or blush, and low-growing silver or blue succulents.*

*Add pops of bright, happy color with perennials and annuals in vivid pink or orange.*

*Keep the dark and light in balance in every view.*







## TWO

### *Upscale Relaxation*

*Create a serene space with  
a simplified color palette and  
lush foliage.*





### Maiden Grass

This attractive ornamental grass has fine-textured, silver-green blades that turn a golden-bronze after first frost. Plant en masse to use as a lush screen.

UP TO 8' TALL AND 5' WIDE  
FULL SUN  
ZONES 4-9  
#06156



### Bright Star Yucca

Add drama and structural interest with boldly colored rosettes of strappy green leaves with bright yellow edges.

ROSETTES UP TO 2' TALL, 5' WIDE  
FULL SUN  
ZONES 7-10  
#05034



### Tropicanna® Canna

An exceptional container specimen that offers dramatic texture and color. Leaves emerge burgundy and mature with stripes of red, pink, yellow, and green.

UP TO 5' TALL AND 4' WIDE  
FULL SUN  
ZONES 7-11  
#02248



### Northern Exposure™ Sienna Heuchera

A long-lived, hardy, and rust-resistant heuchera that adds a pop of color with foliage that emerges green and turns burnt orange as it matures.

UP TO 13" TALL, 21" WIDE  
PARTIAL SHADE TO FULL SUN  
ZONES 4-9  
#44080



### Hot Blooded™ Lantana

A vibrant summer bloomer perfect for containers. Produces a prolific, non-stop show of red-hot flowers on a dense mound of green foliage.

UP TO 24" TALL AND WIDE  
FULL SUN  
GROW AS AN ANNUAL  
#43676



### Elijah Blue Fescue

The icy-blue color of this compact, clumping ornamental grass holds up even through the heat of summer.

UP TO 12" TALL AND WIDE  
FULL SUN  
ZONES 4-11  
#03667



### Ghost Fern

More easy-going than other ferns, this vigorous variety can tolerate brief dry spells. Silver-green fronds have deep-purple midribs.

UP TO 3' TALL AND WIDE  
FULL TO PARTIAL SHADE  
ZONES 4-9  
#01876



### Golden Spirit Smoke Tree

A favorite for arid climates, with spectacular scorch-resistant foliage that emerges lime green, matures to brilliant gold, then turns red in fall.

UP TO 8' TALL AND 6' WIDE  
FULL SUN  
ZONES 4-8  
#01661

## Get the Look: Upscale Relaxation

Turn your backyard into an instant paradise with soothing greens and pops of color. This garden style is about splurging on plants and furnishings that create the soothing atmosphere of an upscale spa or a boutique hotel. Choose broad leafed plants, hardy ferns and other warm greenery; adding some bright color as an accent. Finish with a cozy firepit and soft lounge seating.

#### HOW TO CREATE IT

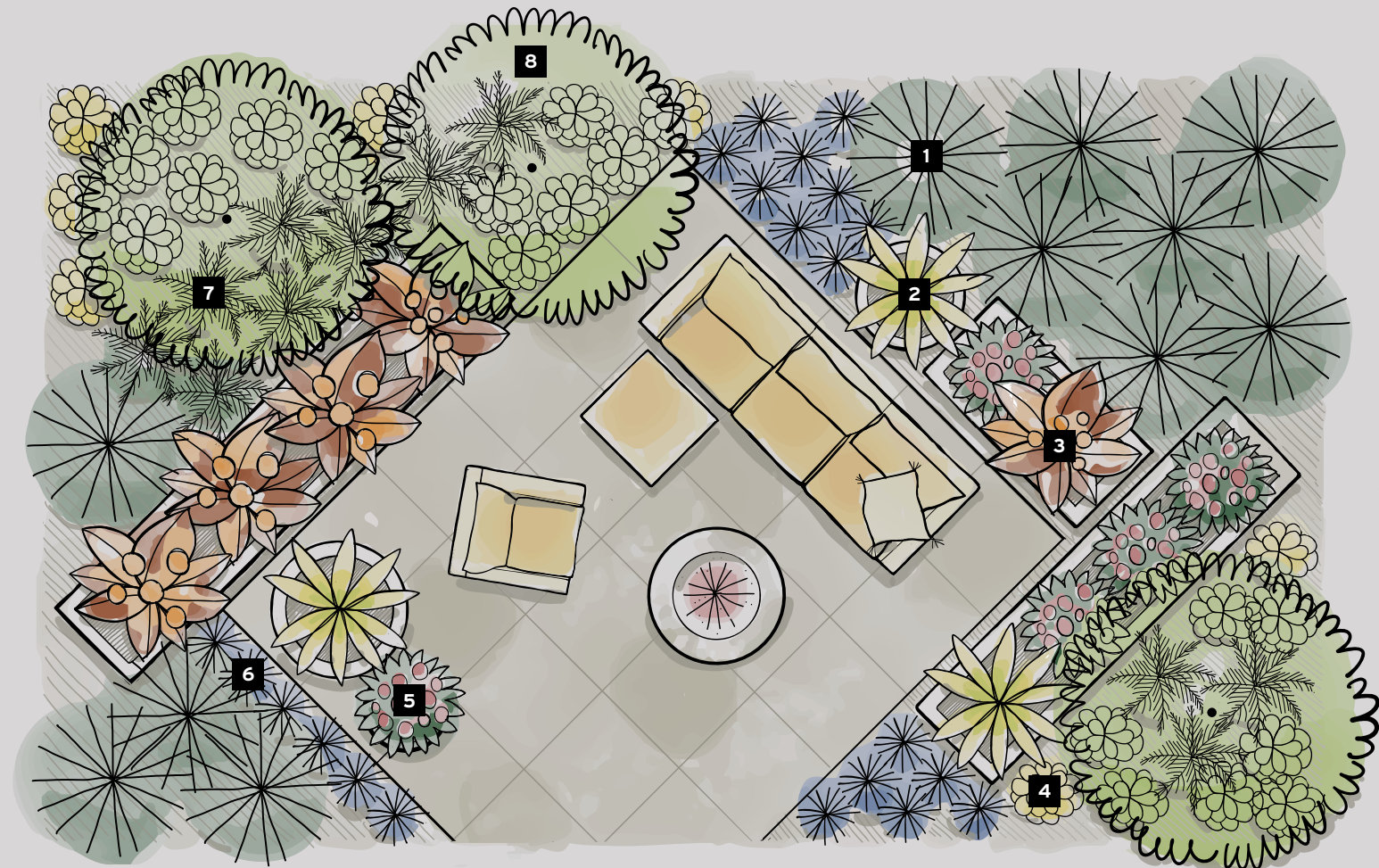
*Select leafy shrubs, tall grasses and trees that catch the breeze with gentle movement.*

*Plant trees and taller hedges to conceal walls.*

*Use plantings to frame a seating area.*

*Choose low-growing mounding grasses and perennials to soften the scene.*

*Add tropical color or indoor plants in containers for easy updates.*







DESIGN BY TICHENOR & THORP ARCHITECTS | PHOTO BY ROGER DAVIES

### THREE

#### *Architectural Simplicity*

*Use repetition of plants,  
color, and form to give a sense of  
timelessness.*





### Spartan Juniper

A stately columnal evergreen with dense branching and dark green foliage. The naturally symmetrical form rarely needs pruning.

UP TO 15' TALL, 5' WIDE  
FULL SUN  
ZONES 4-9  
#04730



### Dark Knight Bluebeard

A compact, mounding, and pollinator-friendly shrub with dense silver-gray foliage and deep purple-blue flowers that offer late-summer color.

UP TO 2' TALL AND WIDE  
FULL SUN  
ZONES 5-9  
#02289



### EverColor® Everlite Variegated Sedge

A compact mound of slender, arching, and variegated foliage adds fine texture and contrast. Plant en masse for dramatic texture.

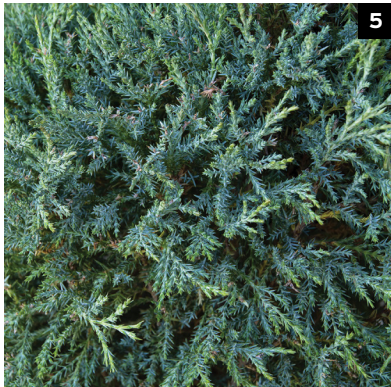
UP TO 12" TALL, 8" WIDE  
FULL SHADE TO PARTIAL SUN  
ZONES 5-9  
#42841



### Grande™ Black Heuchera

A big, bold hybrid with large, wavy, dark burgundy-to-black leaves that stand up to heat. Plant in groups for a dramatic, high-contrast effect.

UP TO 22" TALL, 18" WIDE  
PART TO FULL SHADE  
ZONES 4-9  
#44088



### Medora Juniper Topiary Form

Blue-green foliage and a naturally narrow columnal form look stunning in topiary form. Tolerates heat, cold drought, and seacoast exposure.

UP TO 10' TALL, 3' WIDE  
FULL SUN  
ZONES 3-7  
#05270



### Sirens' Song™ Dark Night Heuchera

Deep purple-red foliage maintains its color even in sunnier conditions. Sprays of reddish-pink blooms lure hummingbirds in late spring.

UP TO 18" TALL, 15" WIDE  
PARTIAL SHADE TO PARTIAL SUN  
ZONES 4-9  
#42866



### Green Mountain Boxwood

A vigorous, vibrant evergreen shrub with a naturally cone-shaped, upright habit that makes it perfect for topiary forms and sculpted hedges.

UP TO 5' TALL AND 3' WIDE  
FULL TO PARTIAL SUN  
ZONES 4-9  
#01382



### Seaside Serenade® Bar Harbor Hydrangea

An exceptionally hardy and compact form of Annabelle hydrangea that produces masses of big, white, and long-lasting flower heads on sturdy stems.

UP TO 4' TALL AND WIDE  
FULL TO PART SUN  
ZONES 3-8  
#41079

# Get the Look: Architectural Simplicity

The Architectural Simplicity garden is elegant and timeless. It evokes a romantic ideal of British gardens framed by clipped boxwood hedges, or an Italian summer afternoon in a courtyard lined by cypress or juniper. The key rules at play here are symmetry and repetition, which makes this style easier than others to execute in a rectangular or square space.

## HOW TO CREATE IT

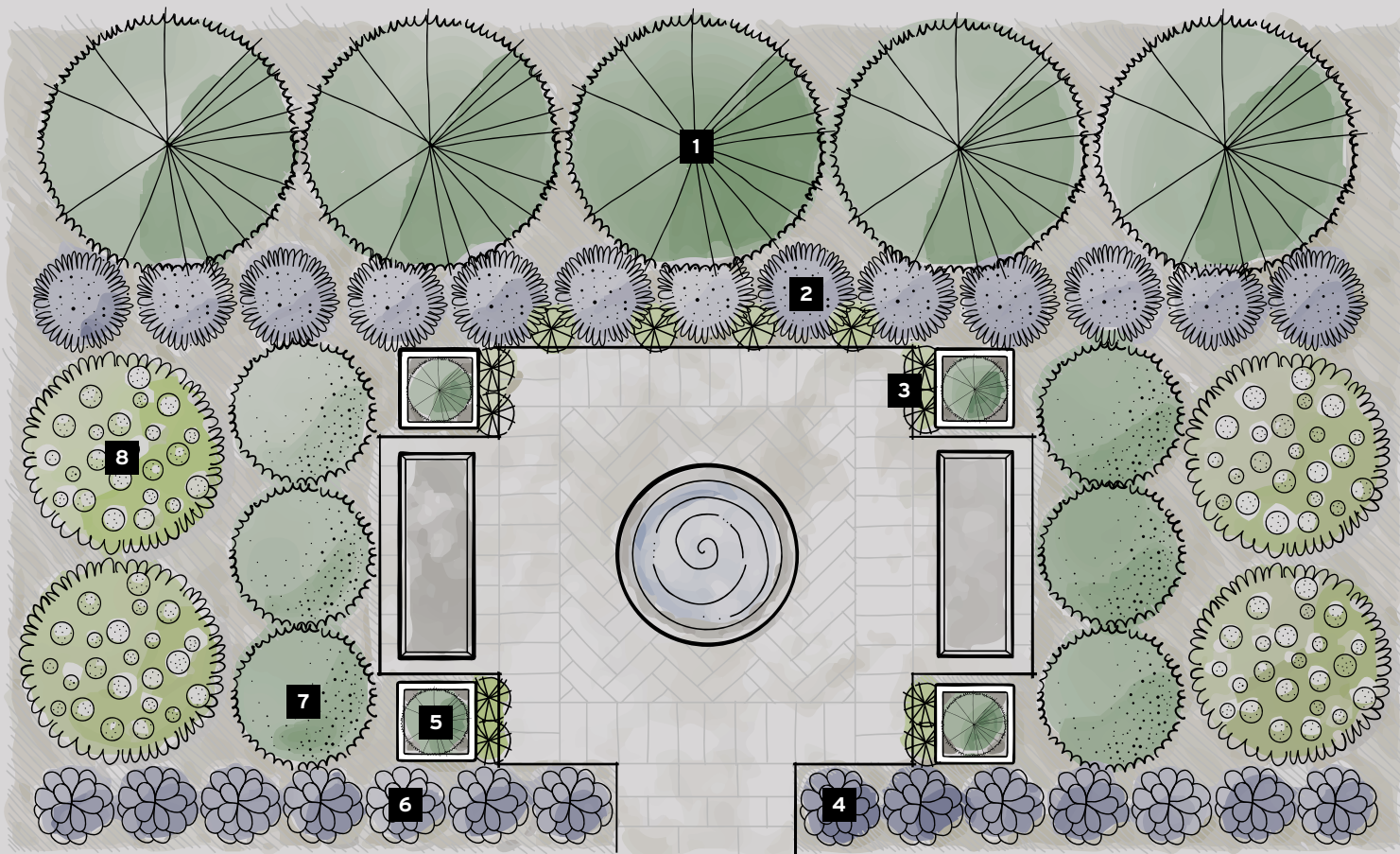
*Use symmetry and geometry in your planting plan.*

*Choose one or two evergreens as your main element, and repeat in rows.*

*Add punctuation or statement plants, such as a topiary form in a globe, spiral or pyramid, around seating areas or entries.*

*Choose flowering shrubs, if using, with blooms in white or cooler hues.*

*Soften the formality a touch with grasses.*







DESIGN BY CHRISTIAN DOUGLAS DESIGN | PHOTO BY ADAM POTTS

## FOUR

### *Garden of Abundance*

*Create a garden of edible and pollinator plants, weaving in lush foliage and bright flowers.*





**Kiwi Magic™ Hardy Kiwi Combination**

A vigorous, cold-hardy variety with glossy foliage, fragrant blooms, and delicious fruit. A male pollinator is planted in container for a high yield.

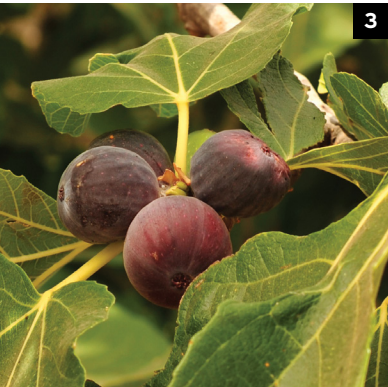
UP TO 25' TALL, 20' WIDE  
FULL TO PARTIAL SUN  
ZONES 4-8  
#42411



**Evolution™ Colorific™ Coneflower**

Dense petals in a palette of pink hues entice pollinators, while lush foliage creates a backdrop for the summer-long profusion of blooms.

UP TO 20" TALL, 18" WIDE  
FULL SUN  
ZONES 4-9  
#41360



**Chicago Hardy Fig**

An attractive ornamental tree that produces sweet, purple-brown fruit with pink flesh.

UP TO 15' TALL, 12' WIDE  
(SMALLER IN CONTAINER)  
FULL SUN  
ZONES 6-10 CAN TOLERATE ZONE 5 TEMPS IF SHELTERED  
#09581



**Steffi™ Blush Pink Gaura**

An exceptionally compact variety that's perfect for hot, dry gardens. Red stems and blush-pink blooms provide color from late spring through early fall.

18" TALL, 20" WIDE  
FULL SUN  
ZONES 5-10  
#43813



**Thumbelina Leigh English Lavender**

An aromatic, easy-care, compact shrub with profuse violet-blue flowers that bloom up to three times per year (with pruning).

UP TO 18" TALL, 12" WIDE  
FULL SUN  
ZONES 5-9  
#02848



**Evolution™ Embers™ Sparks Coneflower**

Bright, sunny yellow flowers provide nectar for pollinators all summer long. Dried flower heads offer nutrition for songbirds in winter.

UP TO 20" TALL, 18" WIDE  
FULL SUN  
ZONES 4-9  
#42875



**Superlicious™ Blackberry**

A thornless dwarf blackberry that produces a fireworks-like display of large, juicy berries in the summer. Produces on second-year canes.

UP TO 4' TALL AND WIDE  
FULL SUN  
ZONES 4-9  
#44033



**Northwind Switch Grass**

An upright, clumping grass with foliage that turns gold in autumn. Sturdy stems provide interest and protection to songbirds in winter.

UP TO 6' TALL, 3' WIDE  
FULL TO PARTIAL SUN  
ZONES 4-9  
#02296

Get the Look: Garden of Abundance

This landscape celebrates the ornamental beauty and lushness of the edible and productive garden. It's not about raised beds, but rather integrating edible plants as discoveries. Fruiting vines, berry shrubs and small trees weave through perennials and grasses. This garden relies on pollinator plants to attract birds, butterflies and bees to create a connected landscape.

HOW TO CREATE IT

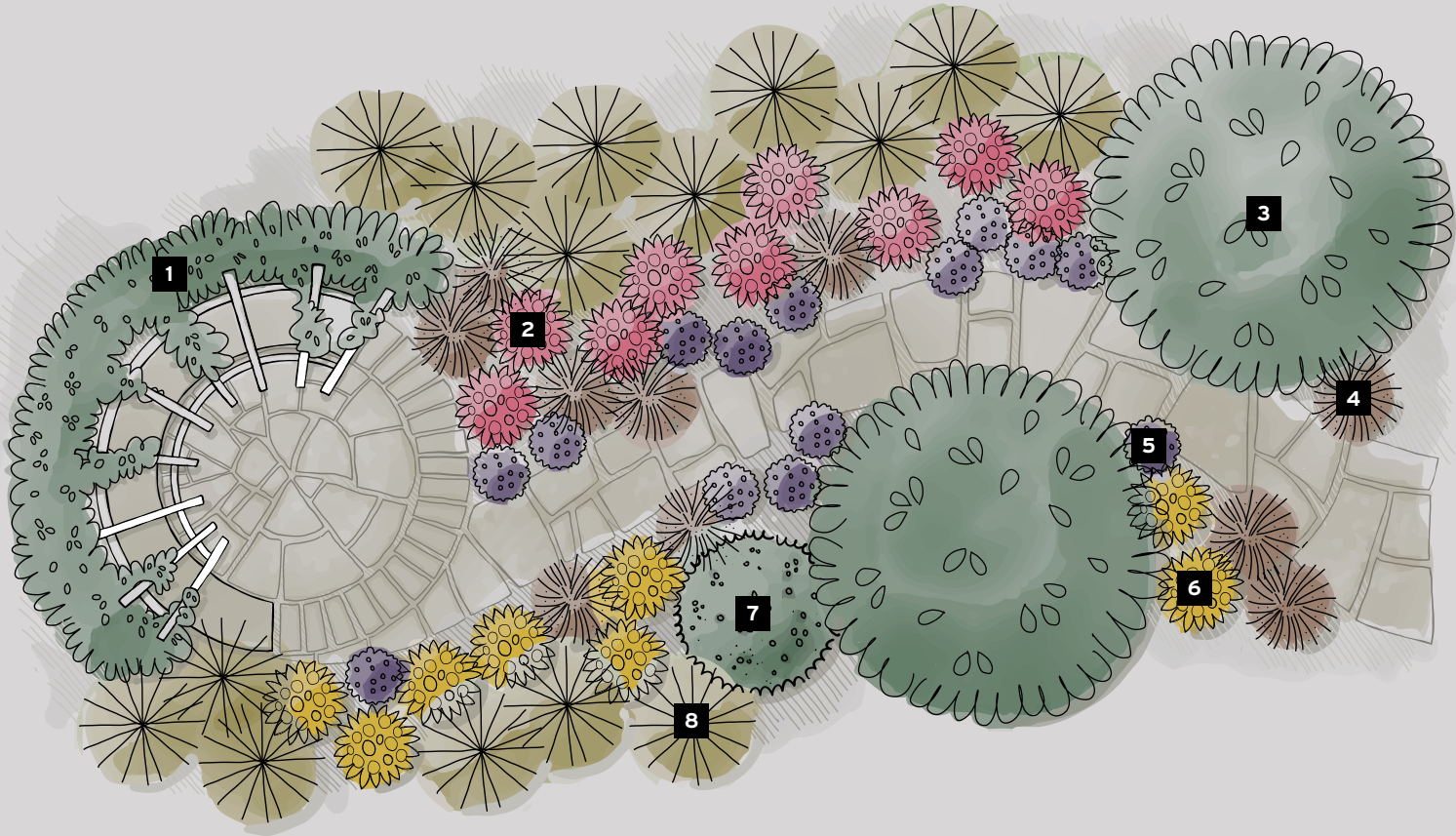
*Place fruit trees and vines as the important anchors in your landscape.*

*Draw visitors through the garden with informal, curving pathways.*

*Arrange diverse pollinator plants with different bloom seasons throughout your garden to attract activity in multiple places.*

*Consider herbs as lovely groundcovers and borders near pathways.*

*Use ornamental grasses to soften the look and act as visual transition between bright blooms.*







DESIGN BY JACKY O'LEARY | PHOTO BY DOREEN WYNJA

## FIVE

### *Dressed Up Bohemian*

---

*Create a relaxed space with  
a mixture of textures, statement  
plants and ombré blooms.*





**Golden Duke® Eastern Hemlock**

A superb, exclusive new evergreen with glowing golden foliage on arching branches. Improved sun tolerance over other gold hemlocks.

UP TO 10' TALL, 3' WIDE  
PART TO FULL SUN  
ZONES 4-9  
#01265



**Chateau™ de Chantilly Rose of Sharon**

Large, exquisite flowers of white cover stems from top to bottom, each with a deep red-violet center. Blooms through summer.

UP TO 6' TALL, 4' WIDE  
PART TO FULL SUN  
ZONES 5-9  
#40950



**Karley Rose Fountain Grass**

A graceful and stunning grass with arching foliage and smoky rose-purple flower spikes that glow when backlit by the sun.

UP TO 4' TALL AND WIDE  
FULL SUN  
ZONES 5-10  
#04480



**Color Guard Adam's Needle**

Slightly arching, sword-shaped, striped foliage of creamy white and dark green offers architectural interest and unexpected color.

UP TO 4' TALL AND WIDE  
FULL SUN  
ZONES 4-10  
#09015



**FloralBerry® Champagne St. John's Wort**

Buttery yellow flowers produce clusters of creamy white berries on this well-branched, rust-resistant, and fuss-free shrub.

UP TO 3' TALL AND WIDE  
PART SHADE TO FULL SUN  
ZONES 5-9  
#41802



**Mesa Verde® Ice Plant**

A stunning display of pink flowers bloom against succulent, gray-green foliage from late spring until first frost. Award-winning and non-aggressive.

UP TO 6" TALL, 24" WIDE  
FULL SUN  
ZONES 4-10  
#05946



**Jazzy Jewel® Andorra Juniper**

Exceptional bright-green and gold-splashed foliage on a naturally spreading form that creates a showy and durable groundcover.

UP TO 2' TALL, 6' WIDE  
FULL SUN  
ZONES 3-9  
#04968



**Tiger Eye Coneflower**

This compact and eye-catching coneflower variety is covered in tons of flowers all summer, and features blooms in shades of orange.

UP TO 18" TALL AND WIDE  
FULL SUN  
ZONES 4-9  
#44828

# Get the Look: Dressed Up Bohemian

This garden is playful and romantic, but not chaotic. Inspired by beautiful graphic foliage and fine textures, this trend can combine conifers, grasses, or ferns with unusual statement plants to catch the eye. Fanciful perennials and flowering shrubs with ombre-colored blooms add color. Add a patterned umbrella or sun shade over a lounge area to complete the mood.

## HOW TO CREATE IT

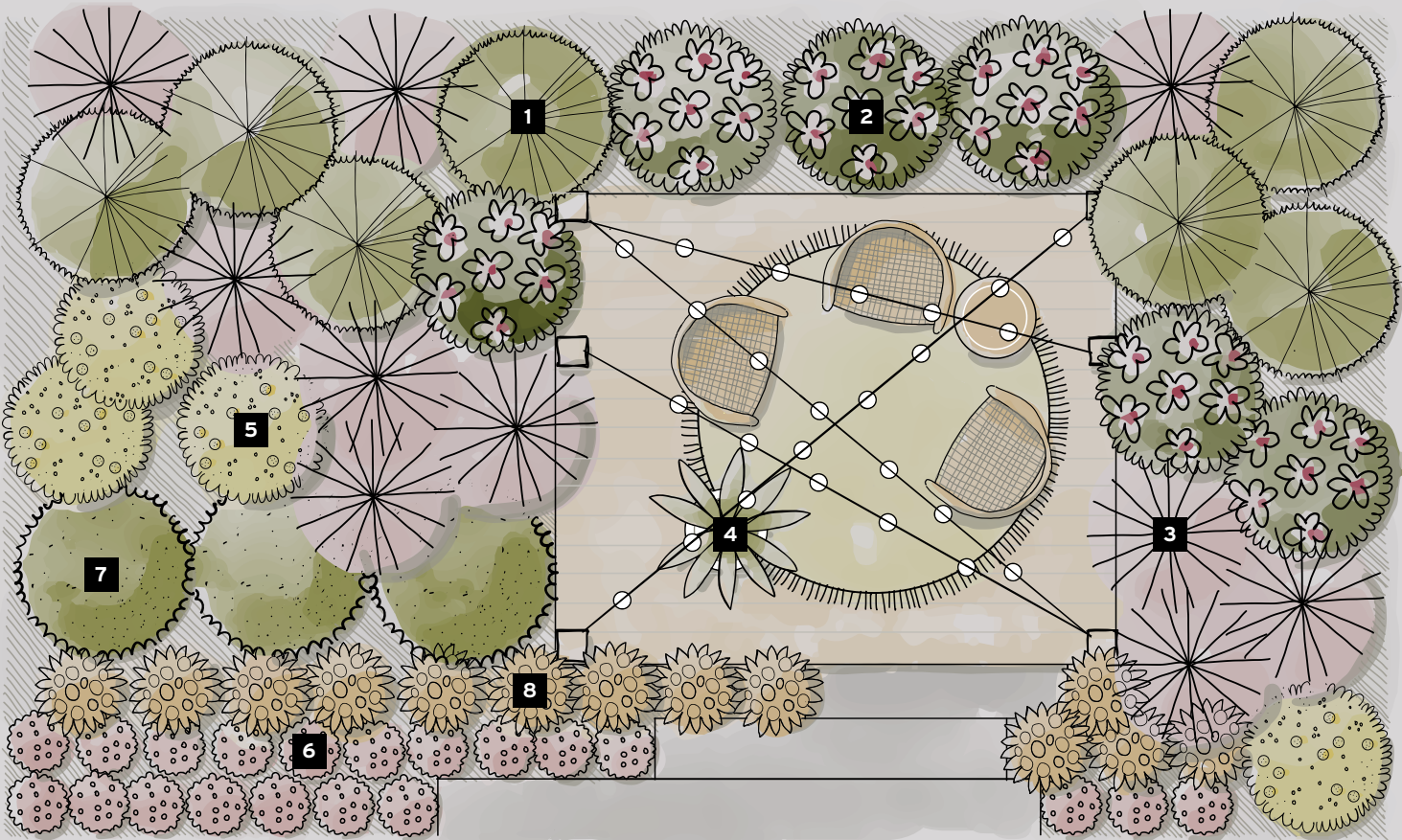
*Choose plants with distinctive foliage sizes and textures, from broadleaf to needles.*

*Add one or two unusual statement plants in containers.*

*Be fearless in mixing color and pattern overall, but keep it unified by planting in mass.*

*Choose graceful ornamental grasses to blend throughout your landscape.*

*Select perennials with soft ombre shades of blooms on each plant.*







LANDSCAPE DESIGN ILLUSTRATIONS BY LISA NUNAMAKER, CREATOR OF PAPER GARDEN WORKSHOP

FRONT COVER: PHOTO BY KELLER & KELLER

BACK COVER: DESIGN BY WESLEY YOUNIE | PHOTO BY DOREEN WYNJA



**MONROVIA®**

*Grow Beautifully*

©2022 MONROVIA NURSERY COMPANY.