

Shades of Beautiful

10 STUNNING PALETTES FOR
SPRING AND SUMMER



MONROVIA®

Grow Beautifully

Dark Meets Light

**LITTLE JOKER® NINEBARK
KREBS DESERT BLOOM HENS
AND CHICKS**

**SIRENS' SONG™ DARK
NIGHT HEUCHERA**

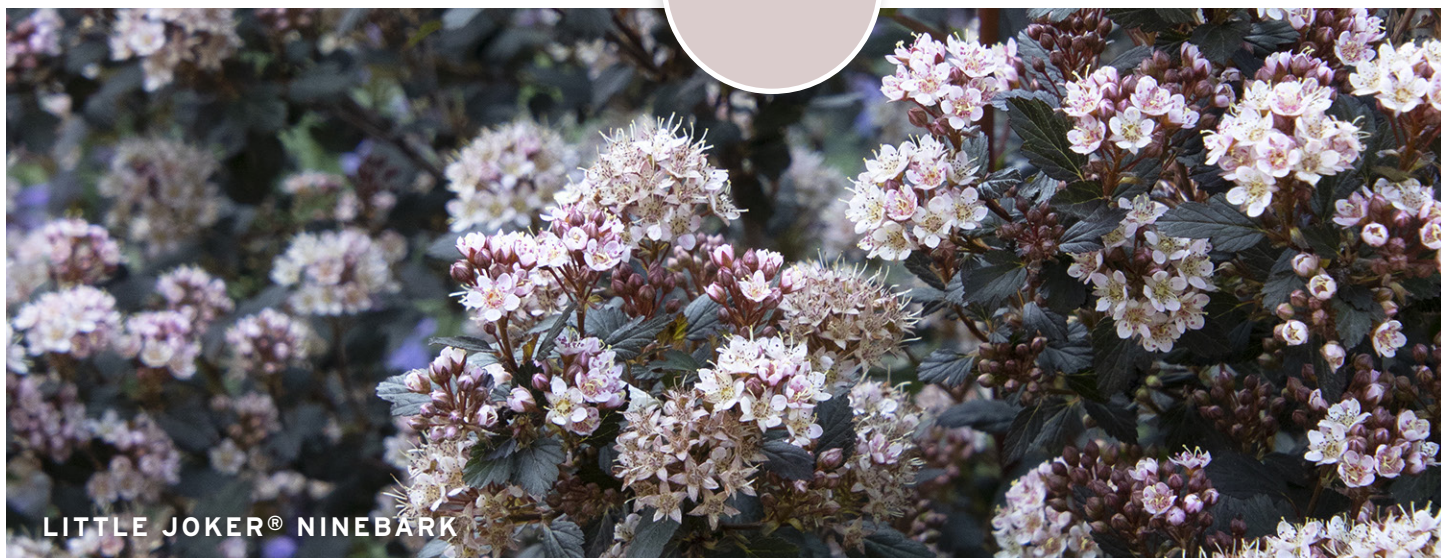
This mesmerizing combo adds drama to containers, borders, and large gardens. Krebs Desert Bloom Hens and Chicks (Zones 4-9) lays the groundwork with an alluring texture and coloration that fluctuates seasonally with green and purple-red tones. Add the deep, dark drama of the sun-tolerant foliage of Sirens' Song™ Dark Night Heuchera (Zones 4-9) and you've set the stage for Little Joker® Ninebark (Zones 4-8) to shine with its profusion of pink flowers and burgundy-purple leaves. This hardy perennial palette requires little maintenance once established.



**KREBS DESERT BLOOM
HENS AND CHICKS**



**SIRENS' SONG™ DARK NIGHT
HEUCHERA**



LITTLE JOKER® NINEBARK



SUNBURST™ SPREADING LANTANA

Sunny Day

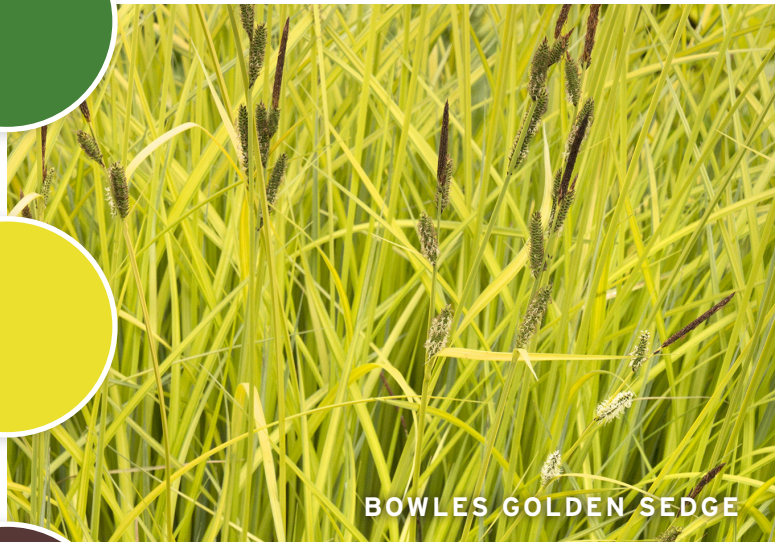
**SUNBELIEVABLE™ BROWN EYED
GIRL SUNFLOWER**

BOWLES GOLDEN SEDGE

**SUNBURST™ SPREADING
LANTANA**

What better way to greet visitors than a cheerful vignette like this one? It's like happiness in a container, with the glowing foliage of Bowles Golden Sedge (Zones 4-9) billowing around the sunny yellows of SunBelievable™ Brown Eyed Girl Sunflower (annual) and Sunburst™ Spreading Lantana (Zones 9-11 or grow as an annual). The SunBelievable™ is like no sunflower you've seen before, with prolific, non-stop blooms and a rounded form that can grow to 3' tall.

Site this radiant combination in an entryway container or border to put anyone who enters your home in a good mood.



BOWLES GOLDEN SEDGE



W

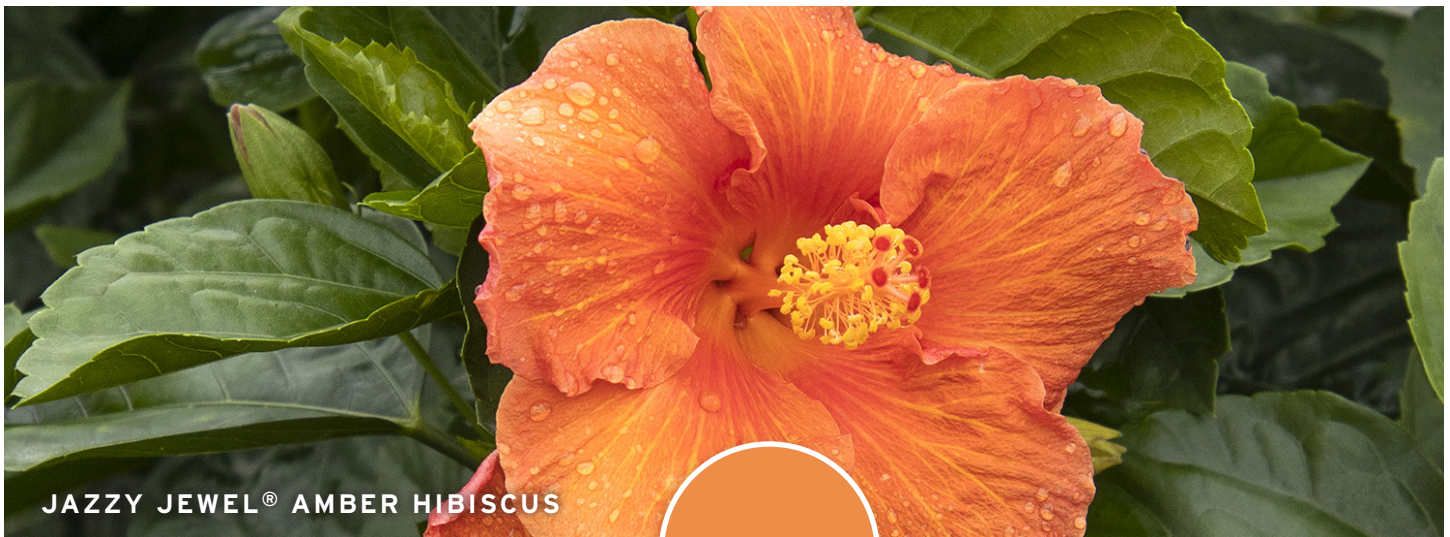


Refreshing and Refined

GREEN TOWER® BOXWOOD
SEASIDE SERENADE® CAPE
LOOKOUT HYDRANGEA
EVERCOLOR® EVEREST
VARIEGATED SEDGE

The simple sophistication of this pared-down color palette never goes out of style. This is the perfect elegant combo for gardens across the country, and a go-to for top designers. An evergreen shrub like the Green Tower® Boxwood (Zones 5-9) is a great place to build a foundation in color, texture, and structure. Layer in the lush dark-green foliage and huge, long-lasting white blooms of Seaside Serenade® Cape Lookout Hydrangea (Zones 4-9) for dramatic impact. Add a graceful and glowing groundcover like EverColor® Everest Variegated Sedge (Zones 5-9) for a timeless look that always feels fresh.





JAZZY JEWEL® AMBER HIBISCUS



FOXTAIL FERN



TROPICANNA® CANNA



BRIGHT STAR YUCCA

Paradise Found

JAZZY JEWEL®
AMBER HIBISCUS

FOXTAIL FERN

TROPICANNA® CANNA
BRIGHT STAR YUCCA

Here's a winning recipe for bringing the feel of an upscale resort home. The warm, glowing tones of Jazzy Jewel® Amber Hibiscus (Zones 9-11) and Tropicanna® Canna (Zones 7-11) are made to appear even richer when paired with the lush green of the Foxtail Fern (Zones 9-11) and striking color and texture of Bright Star Yucca (Zones 7-10). If you live in a climate with cold winters, these are perfect for creating large, lush tropical containers that can be stored over the winter or recreated next year.



PURPLE DRAGON DEAD NETTLE

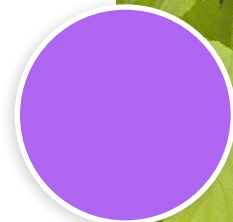
Gemstones

**GOTEMBA GOLDEN
JAPANESE SPIKENARD**

**SEASIDE SERENADE®
NEWPORT HYDRANGEA**

PURPLE DRAGON DEAD NETTLE

Glittering tones of amethyst and peridot shine in this palette for partly shaded gardens. When the brilliant yellow-green foliage of Gotemba Golden Japanese Spikenard (Zones 4-10) is sited near the showy purple flowers of Seaside Serenade® Newport Hydrangea (Zones 4-9), both plants seem to shine even brighter. The Gotemba adds to the splendor in late summer with sprays of white flowers that develop fireworks of shiny purple-black berries. Plant Purple Dragon Dead Nettle (Zones 4-9) as a shimmering groundcover that sparkles with silvery leaves and vibrant, deep-purple flowers.



GOTEMBA GOLDEN
JAPANESE SPIKENARD



SEASIDE SERENADE®
NEWPORT HYDRANGEA



**SUPREME™ CANTALOUPE
CONEFLOWER**



ANGEL® NINEBARK



ORANGENA™ VACCINIUM

Bohemian Sunset

**SUPREME™ CANTALOUPE
CONEFLOWER**

ORANGENA™ VACCINIUM

ANGEL® NINEBARK

This plant palette is as dreamy and gorgeous as it is unique and unexpected. The new, colorful evergreen Orangena™ Vaccinium (Zones 7-10) has orange-red new growth that holds its color through the summer, and positively glows in a shrub planting.

Plant it with the rare melon-orange of Supreme™ Cantaloupe Coneflower (Zones 4-10) and the oranges and reds of Angel® Ninebark (Zones 4-8) to get a spectacular ombre-sunset effect. Need a cold-hardy substitute for Orangena™? Try Butterscotch Baby™ Spirea (Zones 4-9), which has a similarly glowing disposition.



BLUE BALLOON® BLUEBEARD

PANTONE® Very Peri

BLUE BALLOON® BLUEBEARD
NITTY GRITTY™ PEACH ROSE
ELIJAH BLUE FESCUE
SUNSPARKLER® CHERRY
TART SEDUM

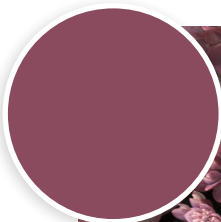
An artful palette inspired by PANTONE®'s color of the year, Very Peri, and all the garden possibilities it brings to the table. We love the calm balance of this combination, starting with the low-growing, gently spreading, and deep-pink carpet of SunSparkler® Cherry Tart Sedum (Zones 4-9), which plays well with the cool blue of Elijah Blue Fescue (Zones 4-11). The soft romance of Nitty Gritty™ Peach Rose (Zones 4-9) is paired with the pure periwinkle of Blue Balloon® Bluebeard (Zones 5-9) for a vibrant yet soothing (and low maintenance) tableau.



NITTY GRITTY™ PEACH ROSE



ELIJAH BLUE FESCUE



SUNSPARKLER® CHERRY TART SEDUM

Heavy Metal

TECTONIC™ MAGMA BEGONIA
CASCADE™ BLUSH HELLEBORE
**REGAL RED JAPANESE
PAINTED FERN**

**PLUM PASSION® IMPROVED
HYDRANGEA**

Who knew a shady garden could be so edgy? This dynamic palette combines striking plants that rebel against the typical. Cascade™ Blush Hellebore (Zones 4-9) announces the coming of spring with outward-facing, deep purple-pink blooms. Bicolor lacecap blooms of Plum Passion® Improved Hydrangea (Zones 7-10) pop against the dark-purple foliage in summer. Regal Red Japanese Painted Fern (Zones 4-9) lays a tapestry of silver and violet-red, and the exotic Tectonic™ Magma Begonia (Zones 8-11 or annual) counters with big, dark-green leaves, a subtle gunmetal blue hue, and burgundy undersides and stems.





COLORBURST™ ROSE CAPE FUCHSIA

Bold and Beautiful

COLORBURST™ ROSE CAPE FUCHSIA

CHATEAU™ DE CHANTILLY ROSE OF SHARON

COCO CHILL™ WEIGELA

Have a border or corner of the garden that could use some excitement? Layer these bold, beautiful Monrovia Exclusives and let the color show begin. Use the huge blooms and upright habit of Chateau™ de Chantilly Rose of Sharon (Zones 5-9) as a showy backdrop to the dark and bright Coco Chill™ Weigela (Zones 4-8) and stunning Colorburst™ Rose Cape Fuchsia (Zones 6-10). The color, profuse blooms, and foliage of all three of these plants is unmatched. Need a more cold-hardy alternative for the Colorburst? Try Harlequin™ Magenta Beardtongue, hardy to Zone 5.



COCO CHILL™ WEIGELA



CHATEAU™ DE CHANTILLY ROSE OF SHARON



SUPERCAL® PINK HYBRID PETUNIA



**EVOLUTION™ EMBERS™
SPARKS CONEFLOWER**



EMERALD BLUE CREEPING PHLOX

Confetti

**SUPERCAL® PINK
HYBRID PETUNIA**

**EVOLUTION™ EMBERS™
SPARKS CONEFLOWER**

EMERALD BLUE CREEPING PHLOX

Set the stage for a lively party, cheerful conversation, or upbeat hangout with this energetic container combo. SuperCal® Pink Hybrid Petunia (annual) is the perfect “filler” for container plantings, with a mounding, gently spreading habit and large, vibrant flowers that bloom nonstop until the first hard frost. Evolution™ Embers™ Sparks Coneflower (Zones 4-9) stars as the “thriller” here, with yellow flowers that shine bright. Emerald Blue Creeping Phlox (Zones 3-9) softens the high-energy display as the “spiller,” with a cascade of cool blue-lavender flowers over the container’s edge.

Makes for a lively border, too!



Looking for More Ideas?

SIGN UP

Subscribe to our monthly "Grow Beautifully" newsletter to get premium design inspiration delivered straight to your inbox.

www.monrovia.com/grow-beautifully-eneews

FIND MORE

Discover more inspiration and ideas for plants and design on our "Be Inspired" blog.

www.monrovia.com/be-inspired

JOIN OUR GROWING COMMUNITY

Find us on social media @MonroviaPlants for daily garden inspiration, tips, and plant spotlights

Photos by Doreen Wynja

©DoreenWynja.com

Cover garden design by Robin Parsons



MONROVIA®

Grow Beautifully